



THE DN WISDOM TREE GLOBAL SCHOOL



**A School
as Unique as your Child**

Daycare, Playgroup to Grade 8

EMPATHY | EMPOWERMENT | EXCELLENCE



Our Vision

To provide a centre for excellence in school education, where every child is nurtured, mentored and inspired to unravel her/his potential and be empowered with skills and abilities to succeed as a global citizen.

Jagadish Prasad Naik

Founder Chairman

What Makes Us Unique

We apply differentiated and nurturing learning strategies, so that no child is left behind. We groom young minds towards caring for their environment. We embrace families with fairness and compassion. We treat parents as partners in the educational process. In fact, facilitators, parents and children are partners in a celebration of learning. We see ourselves as an institution that values continuous professional development. We are committed to selecting the finest facilitators and supporting them with the highest quality of professional development. We have the best available resources, the most state-of-the-art campus, equipped with cutting-edge facilities. We benchmark ourselves to global best practices continually.



We are committed to benchmarking education at the highest level by making available the best student development practices.

We inspire our students to continually pursue lives of meaning and purpose.

In a world of badges and blazers, we create Trailblazers!



The school curriculum celebrates the uniqueness of every child. It is designed to nurture the child in all dimensions of his or her life – spiritual, moral, cognitive, emotional, aesthetic, imaginative, social and physical.

Our education system stimulates intellect, hones all-round abilities, ignites passion, and shapes character.

Why The DN Wisdom Tree?

- Redefining primary and secondary education with a curriculum and pedagogy that prepares students for global competencies, including coping skills, value systems and towards harnessing opportunities in the post-pandemic world.
- A set of trained and competent facilitators who believe that curriculum is only a tool and not the master, thereby rising to meet the needs of individual students by recognising their innate talents and propensities, moulding teaching methods to extract best learning outcomes.
- Ongoing R & D by leading educationists to bring in current best global education practices to enable students to adapt to all teaching and learning methodologies.
- Mapping of an intricate and inventive system of encouraging original thinking skills over regular curriculum through project-based learning methods and technology integration.
- Offering best opportunities for sports and games, co-scholastics, and hobbies, communication and personality development, to create a truly holistic and transformative education space.



The Experience of Joyful Learning

At The DN Wisdom Tree Global School we emphasise self-discovery of the world through an enquiry based approach. We nurture a holistic and progressive curriculum where children feel engaged as their innate capacities are fostered in a warm, natural environment. It is a safe, active, and supportive space where facilitators care deeply about each and every child.

Our Facilities

- Multi facilitated Sports Complex
- School Library
- Composite Science Lab
- Computer Lab
- Math Lab
- Makers Lab
- Art
- Visual Art
- Performing Arts
- Pottery
- Carpentry
- Yoga & Meditation
- Soft Gym
- Jungle Gym
- Sand Play
- Auditorium
- Rain Shower
- Kahani Ghar
- Planetarium
- Swimming Pool
- In-School Dining
- Infirmary
- Transport
- 24x7 CCTV Surveillance
- Photography



Why The DN Wisdom Tree?

Greetings, prayer, breakfast, classroom lessons, experiential learning outside the classroom; nutritious meals, sports, skills - art, dance, indoor games, values, communication, volunteering, yoga and meditation and not to forget- communing with nature. That's how a full seven-hour day at The DN Wisdom Tree Global School is mapped.

Some special vignettes of co-scholastics during the day that make us unique and also make a real difference, small but consequential for children and families alike: inhaling fresh air and nature's fragrances, feeling natural textures and seeing natural colours, watching our trees growing, nurturing curiosity and imagination, yoga to build focus and concentration, problem-solving, personality enhancement sessions, storytime - each minute infusing enrichment in children through meaningful experiences in happy spaces!

When we say happy, we mean happy! The smiling faces of our children and our facilitators are the best testimonials. The amazement of visitors when they see our children so independent and joyful is our commendation. The words of gratitude of happy parents is our motivation.

Our greatest reward however is when children don't want to go home at the end of the day. I would like to reassure parents that our team of facilitators constantly and sincerely endeavour to provide a joyous learning experience and an enabling environment for your precious ones. We take pride in providing a secure, nourishing and happy space that children look forward to coming every morning. We would love to see parents guide us with their inputs as our compatriots, so that our journey of imparting learning will be holistic in the truest sense.

Give your child the happiest start to transformational learning, here at The DN Wisdom Tree Global School.

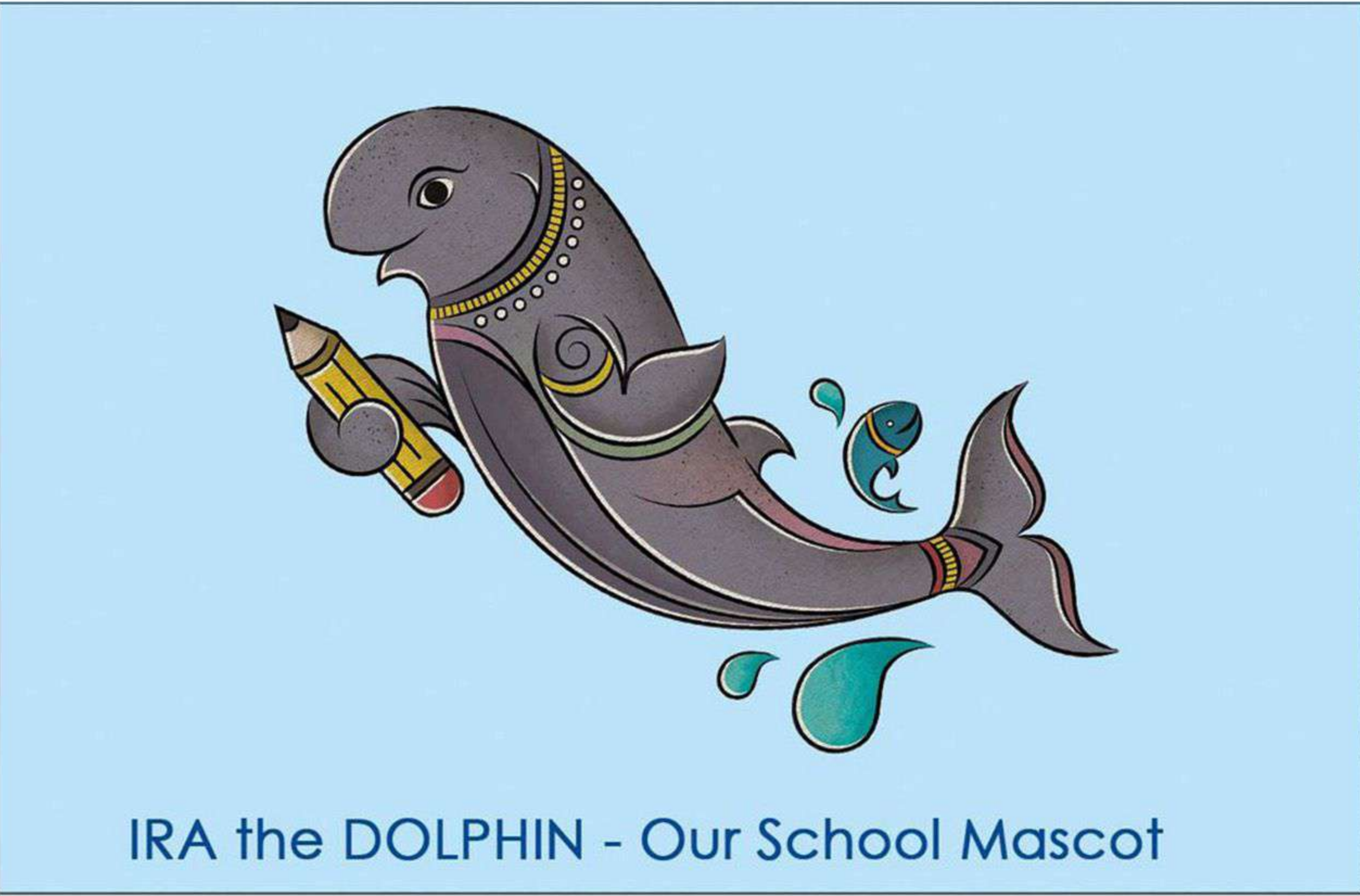


Panchami Manoo Ukil
Vice Chairperson & School Leader

The Wisdom Anthem

In your seed lies Effort
In your root lies Faith
In your trunk lies Fortitude
In your twig lies Truth
In your leaf lies Humility
In your bloom lies Tolerance
In your fruit lies Success
In your spirit lies Excellence

May you flourish and nourish
O ageless Wisdom Tree
Under your shade we shall toil
Under your shade we shall grow...



IRA the DOLPHIN - Our School Mascot

The Irrawady Dolphin is found in the waters of Chilika Lake. It is a threatened species in need of preservation and conservation.

Dolphins are the most intelligent creatures in the animal world, second only to humans. Scientists say that the brain of dolphins is bigger than humans, making them more intelligent than us. They are extremely social animals and display exemplary and complex group behaviour like empathy. If a dolphin mother has a baby then the entire group protects and nurtures the baby. They are playful and great communicators. They recognise each other across the sea through their signature whistles.

Intelligence / Wisdom, Empathy, Collaboration, Happy / Playfulness, Communication - these are some great skills that we look forward to inculcating in our WISDOMITES.

By adopting IRA the Irrawady Dolphin as our mascot, we are raising awareness about the need for conservation of this dolphin species as well as other threatened species of wildlife, reiterating our commitment towards green ethics, building a band of eco-ethical global citizens of the future.

Co-Scholastics

- | | |
|---------------|--------------------|
| Carrom | Personal Grooming |
| Chess | Table Etiquette |
| Scrabble | Social Etiquette |
| Pictionary | Spiritual Wellness |
| Bagatelle | Social Service |
| Table Tennis | Values |
| Snooker | Kabbadi |
| Running Track | Kho-Kho |
| Hurdles | Mallakhamb |
| Long Jump | Photography |
| High Jump | Astronomy |
| Javelin | Gardening |
| Discus | Baking / Cooking |
| Shotput | Carpentry |

Highlights

- The Happiness Model of Learning
- Specially curated, nurturing and holistic learning environment
- Well-designed, spacious campus set amidst green woodlands
- Large ergonomic classrooms, studios and work spaces
- Sensitive and empowered facilitators
- Interactive skill building programmes
- Project based learning
- Early engagement with technology
- Inculcating practices for ecological well-being
- Finishing School for enhancing life skills and shaping character

RESPECT | RESILIENCE | RESPONSIBILITY

ADMISSIONS OPEN
for 2023-24

Daycare, Playgroup to Grade 8



- | | |
|---|--------------|
| Music: Vocal & Instrumental | Badminton |
| Dance: Odishi, Kathak, Western, Ballet & Fusion | Tennis |
| Drama | Volley Ball |
| Painting & Sketching | Basketball |
| Pottery | Cricket |
| Sculpture | Football |
| Mixed Media Art | Hockey |
| Art Installation | Gymnastics |
| Karate | Yoga |
| Roller-Skating | Golf |
| Roll Ball | Horse Riding |
| | Swimming |
| | Water Polo |

Our Heritage Code

- Using and promoting handcrafted products and artisanal services
- Inculcating green practices for promoting conservation and information dissemination on our natural resource heritage
- Sharing and engaging the extended community in preserving cultural heritage
- Ensuring equality and equal opportunity in the workplace, and working to lessen social divides in the community

Demonstrating that we care - about ourselves, our stakeholders, humanity at large and the planet we call home....

To schedule a tour or talk to our counsellors please call
9439080000 / 9439070000

For more information, please visit
www.wisdomtreebbsr.com

An initiative of
Dasarathi Naik Foundation for Excellence

Campus 1
Plot #526 | K 1 | Ghatikia | Kalinga Nagar
Bhubaneswar 751003 | Odisha | India

Campus 2
Plot #740/1363 | Sundarpur | Khandagiri -
Chandaka Road | Bhubaneswar 754005
Odisha | India